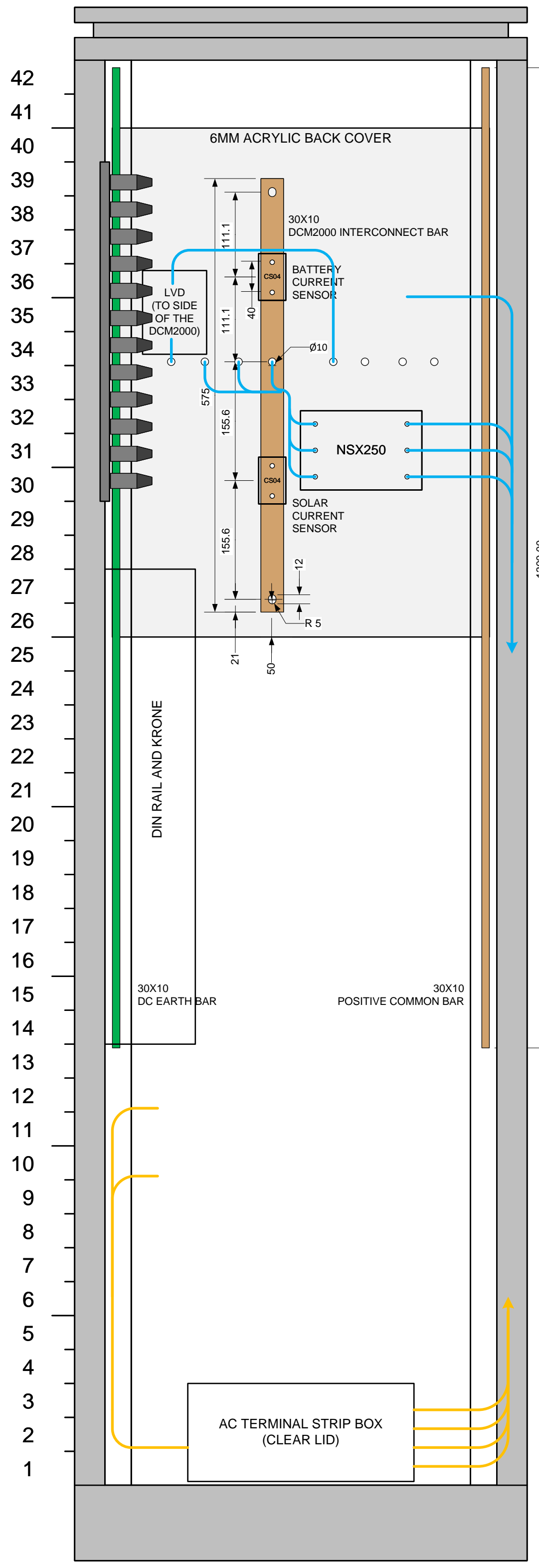
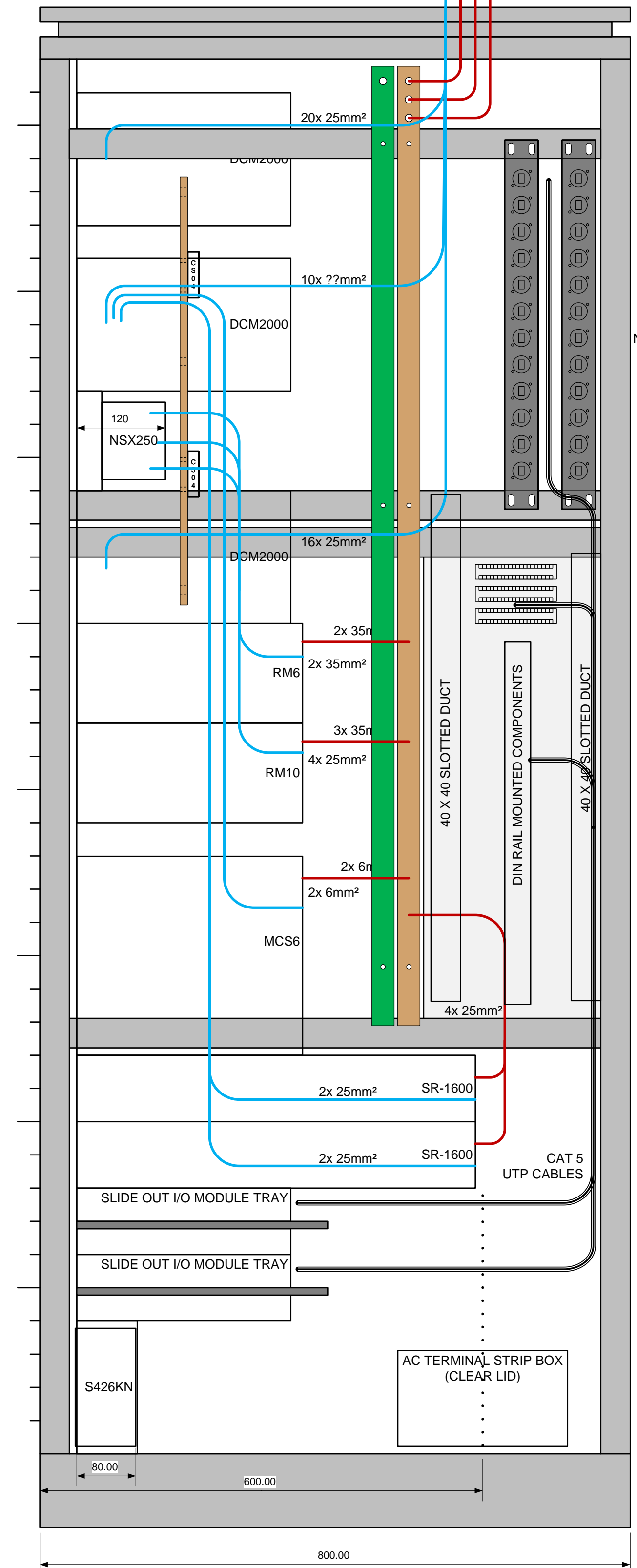


POWER RACK FRONT VIEW



POWER RACK REAR VIEW



POWER RACK SIDE VIEW

- NOTE 1. DCM2000 SUBRACK (EARTH LINK AND POSITIVE BAR REMOVED)
ALL 200A 2P TYPE 1 (100A PER POLE) HEINEMANN CIRCUIT BREAKERS
- NOTE 2. DCM2000 SUBRACK (EARTH LINK AND POSITIVE BAR REMOVED)
CB1,2 60A TYPE 3 HEINEMANN CIRCUIT BREAKERS
CB3,4 30A TYPE 3 HEINEMANN CIRCUIT BREAKERS
CB5 TO CB10 15A TYPE 3 HEINEMANN CIRCUIT BREAKERS
CB11 100A TYPE 3 HEINEMANN CIRCUIT BREAKERS
CB12,13 30A TYPE 3 HEINEMANN CIRCUIT BREAKERS
CB14,15 AND 16,17 160A TYPE 3 DUAL HEINEMANN CIRCUIT BREAKERS
CB18,19,20 15A TYPE 3 HEINEMANN CIRCUIT BREAKERS
200A MAGNETICALLY LATCHED LVD FITTED IN PLACE OF LINK BAR (P/N ZLIM-200C / 48A1.S)
- NOTE 3. NSX250 -3P-TM-G CIRCUIT BREAKER
- NOTE 4. DCM2000 SUBRACK (EARTH LINK AND POSITIVE BAR REMOVED)
ACB1 TO 8 AND CB11 TO 18, ALL 80A TYPE 3 HEINEMANN CIRCUIT BREAKERS
- NOTE 5. RM6 SC300 SUBRACK
2 APR48ES MODULES FITTED
IO-BGP MODULE 1 FITTED
- NOTE 6. RM10 SUBRACK FITTED WITH SC300 FOR EATON BATTERY MONITORING
4 APR48ES MODULES FITTED
- NOTE 7. SR-1600 INVERTER WITH SN-1 ETHERNET MODULE
4 MODULES FITTED
- NOTE 8. SR-1600 INVERTER
0 MODULES FITTED
- NOTE 9. MCS6 4812 RXP SUBRACK
MODIFIED FOR A/B 48V INPUT, TWO 32A INPUT CB WITH AUX CONTACTS WIRED TO SUBRACK DI 1
CB1 - 2 LOAD CB FITTED (63A)
CB3 - 6 LOAD CB FITTED (16A)
- NOTE 10. MCS6 4812 RXP SUBRACK
4 MCU 4812-RXP MODULES FITTED
- NOTE 11. 4 POLE 63A ISOLATION SWITCHES ON RECESSED PANEL
ABB S426KN OR SIMILAR
- NOTE 12. IO-BGP MODULES 2 AND 3 (2 FITTED)
- NOTE 13. IO-BSS MODULES 4 AND 5 (2 FITTED)
- NOTE 14. RITTAL 600 X 600 RACK. PERFORATED DOORS FRONT AND BACK. DIVIDED REAR DOORS.
- NOTE 15. 1RU 12 WAY XLR PANEL, MACARAC P/N 1UXLRPOS
NEUTRIKS RJ45 SOCKETS, NE8FDV-YK, RS COMPONENTS 450-9062
NEUTRIKS RJ45 PLUGS, RS COMPONENTS 197-5001
- NOTE 16. SPC BAR FOR THE 48V SYSTEM MOUNTED TO THE SIDE OF THE CABLE TRAY ABOVE THE POWER AND SOLAR REGULATOR RACKS.
- NOTE 17. 3X 70MM CABLES LINKING THE RACK COMMON BAR TO THE CABLE TRAY SPC.
- NOTE 18. BATTERY RACK AND SOLAR RACK POSITIVE RETURNS ON ALTERNATE BUSBAR HOLES TO DISTRIBUTE THE BUSBAR CURRENT.
- NOTE 19. GENSET KRONE BLOCK 1-10 FITTED WITH ARRESTOR MODULE WITH 90V ARRESTORS
- NOTE 20. DIN AND KRONE 250 X 700MM BACK PLATE.
3MM THICKNESS WITH 10MM X 600MM 90° FOLDED EDGES CENTERED ON BOTH LONG SIDES
- NOTE 21. DCM2000 INTERCONNECTING BUSBAR SECTIONS SURFACED WITH NICKEL PLATING.

REV	BY	DATE	DESCRIPTION	CKD	APP
0	GG		INITIAL DRAFT		

REV	BY	DATE	DESCRIPTION	CKD	APP

REV	BY	DATE	DESCRIPTION	CKD	APP

DRAWN	G. GREBER	5-6-2023
TRACED		
CHECKED		
SUPT DRAFT		
PROJ. ENG.		
APPROVED		
APP. FOR CONST.		

Hamersley Iron Pty Ltd
Hamersley HMS Pty Ltd
Robe River Mining Company Pty Ltd

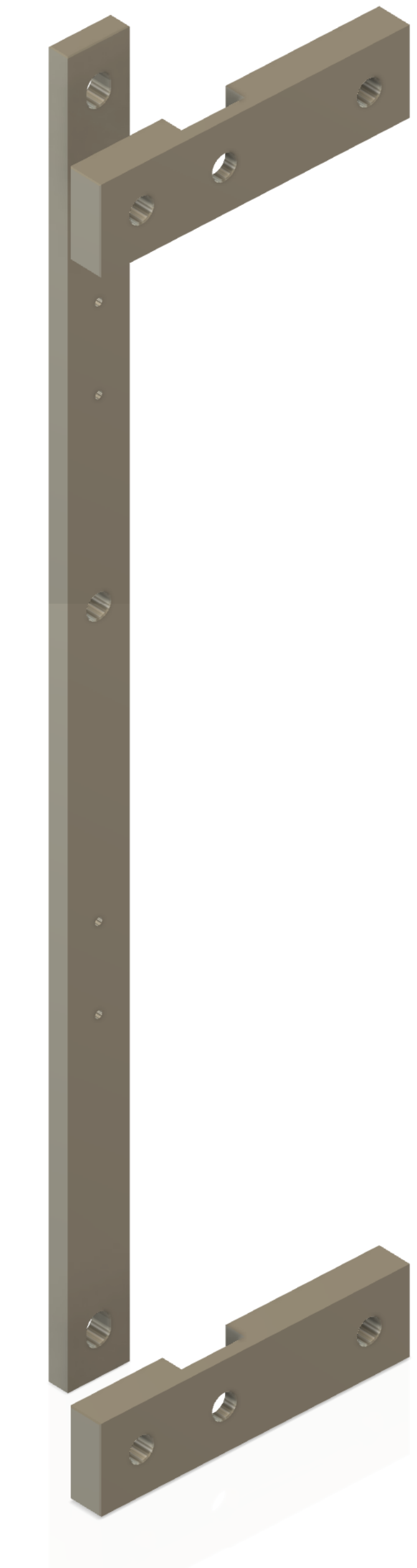
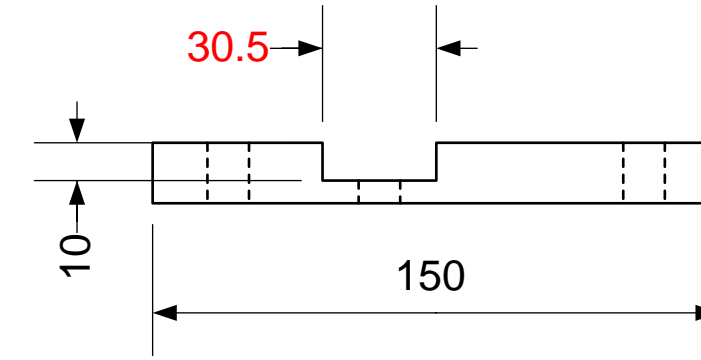
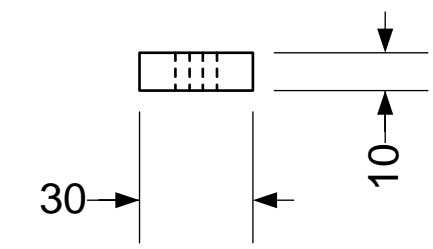
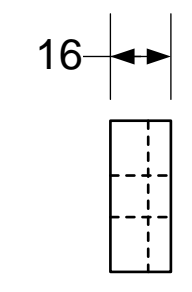
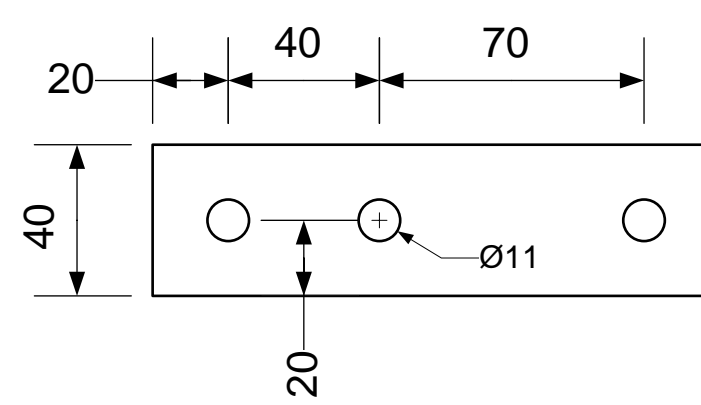
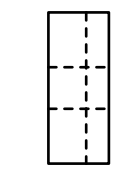
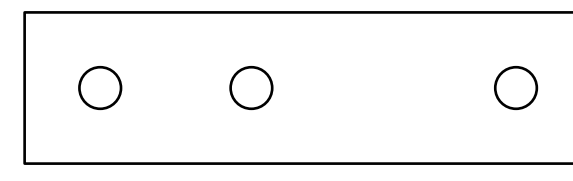
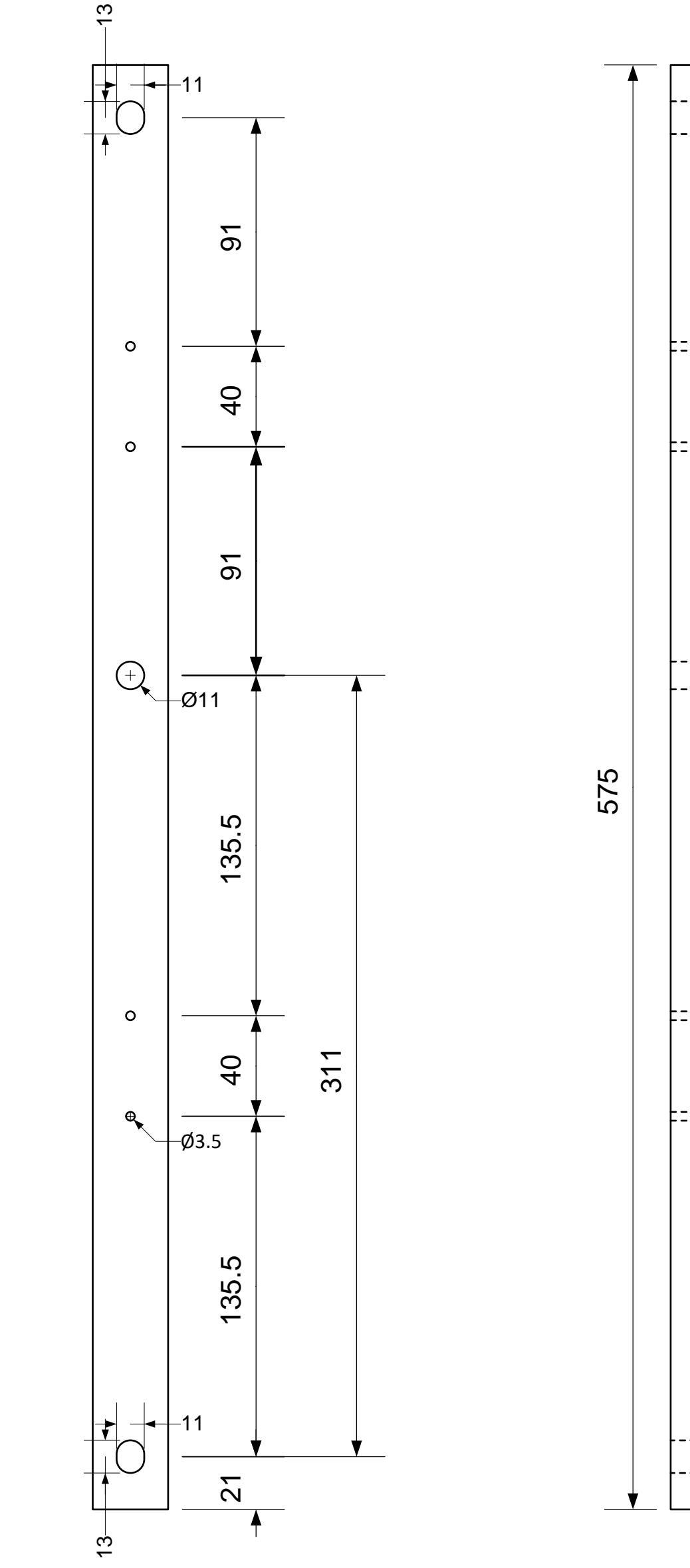
INFORMATION AND REPRESENTATIONS ON THIS DRAWING ARE THE INTELLECTUAL PROPERTY OF THE RIO TINTO GROUP UNLESS SPECIFICALLY IDENTIFIED OTHERWISE. ALL RIGHTS INCLUDING USE RESERVED.

THIRD ANGLE PROJECTION

KP130 RBS SOLAR HYBRID POWER PROJECT
POWER RACK GA

SCALE	NTS
DRAWING NUMBER	REV
PROJECT / JOB NUMBER	

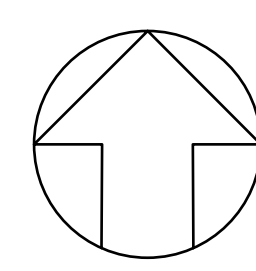
NOTE 1. COPPER BUSBAR SECTIONS PLATED WITH 30 MICRONS BRIGHT NICKEL
 NOTE 2. HIGH TENSILE BOLTS WITH SPRING WASHERS FASTEN THE BUSBAR TO THE DCM2000 LIVE BAR



REV	BY	DATE	DESCRIPTION	CKD	APP
0	GG		INITIAL DRAFT		

REV	BY	DATE	DESCRIPTION	CKD	APP

REV	BY	DATE	DESCRIPTION	CKD	APP

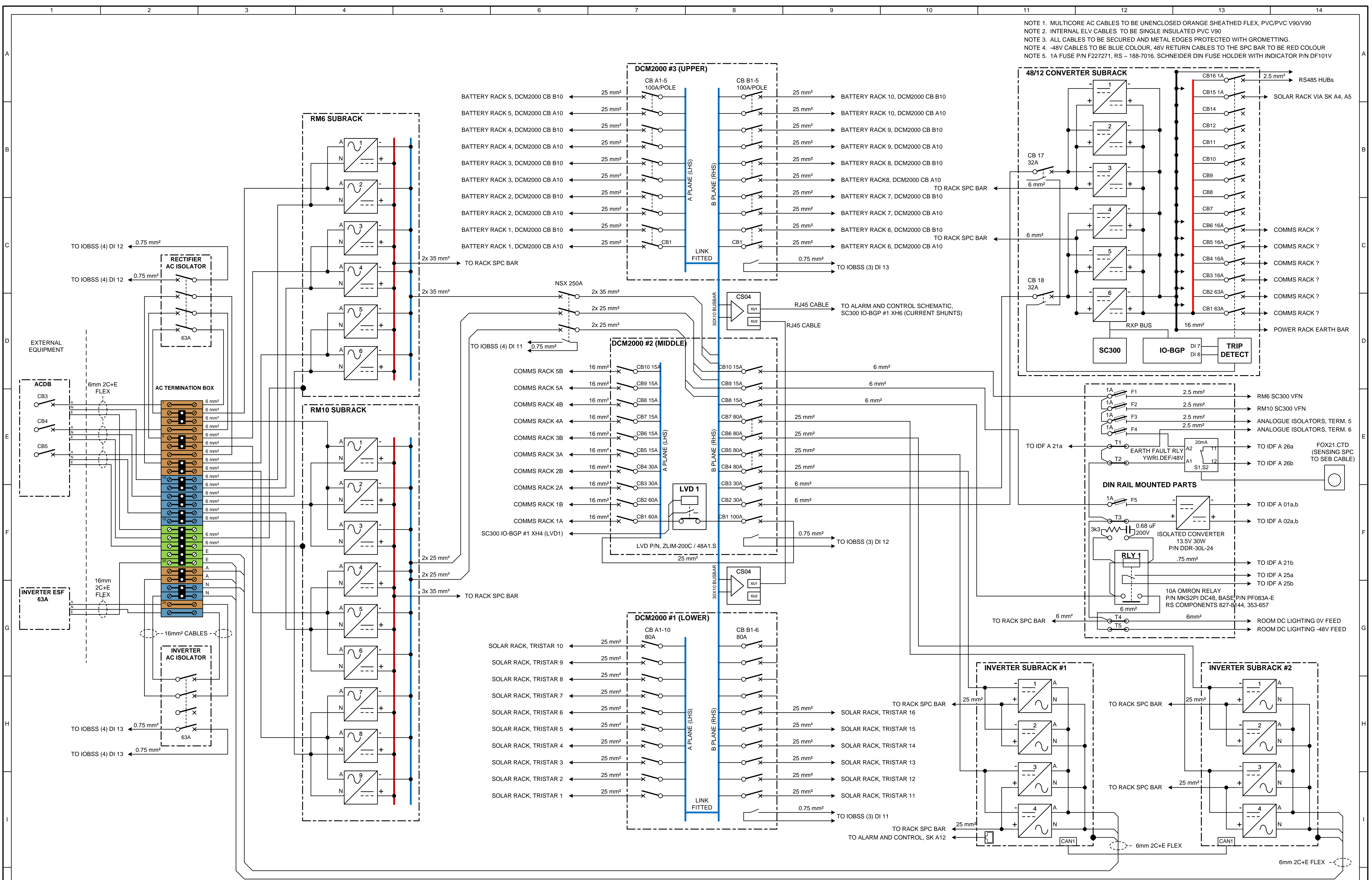


DRAWN	G. GREBER	28-6-2023
TRACED		
CHECKED		
SUPT DRAFT		
PROJ. ENG.		
APPROVED		
APP. FOR CONST.		

RioTinto
 HAMERSLEY IRON PTY LTD
 HAMERSLEY HMS PTY LTD
 ROBE RIVER MINING COMPANY PTY LTD

SCALE: NTS
 DRAWING NUMBER: _____
 PROJECT / JOB NUMBER: _____

INFORMATION AND REPRESENTATIONS ON THIS DRAWING ARE THE INTELLECTUAL PROPERTY OF THE RIO TINTO GROUP UNLESS SPECIFICALLY IDENTIFIED OTHERWISE. ALL RIGHTS INCLUDING USE RESERVED.	THIRD ANGLE PROJECTION
---	------------------------

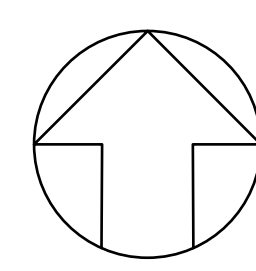


NOTE 1. MULTICORE AC CABLES TO BE UNENCLOSED ORANGE SHEATHED FLEX, PVC/PVC V90/V90
 NOTE 2. INTERNAL ELV CABLES TO BE SINGLE INSULATED PVC V90
 NOTE 3. ALL CABLES TO BE SECURED AND METAL EDGES PROTECTED WITH GROMMETTING.
 NOTE 4. -48V CABLES TO BE BLUE COLOUR, 48V RETURN CABLES TO THE SPC BAR TO BE RED COLOUR
 NOTE 5. 1A FUSE P/N F227271, RS - 188-7016. SCHNEIDER DIN FUSE HOLDER WITH INDICATOR P/N DF101V

REV	BY	DATE	DESCRIPTION	CKD	APP
0	GG		INITIAL DRAFT		

REV	BY	DATE	DESCRIPTION	CKD	APP

REV	BY	DATE	DESCRIPTION	CKD	APP



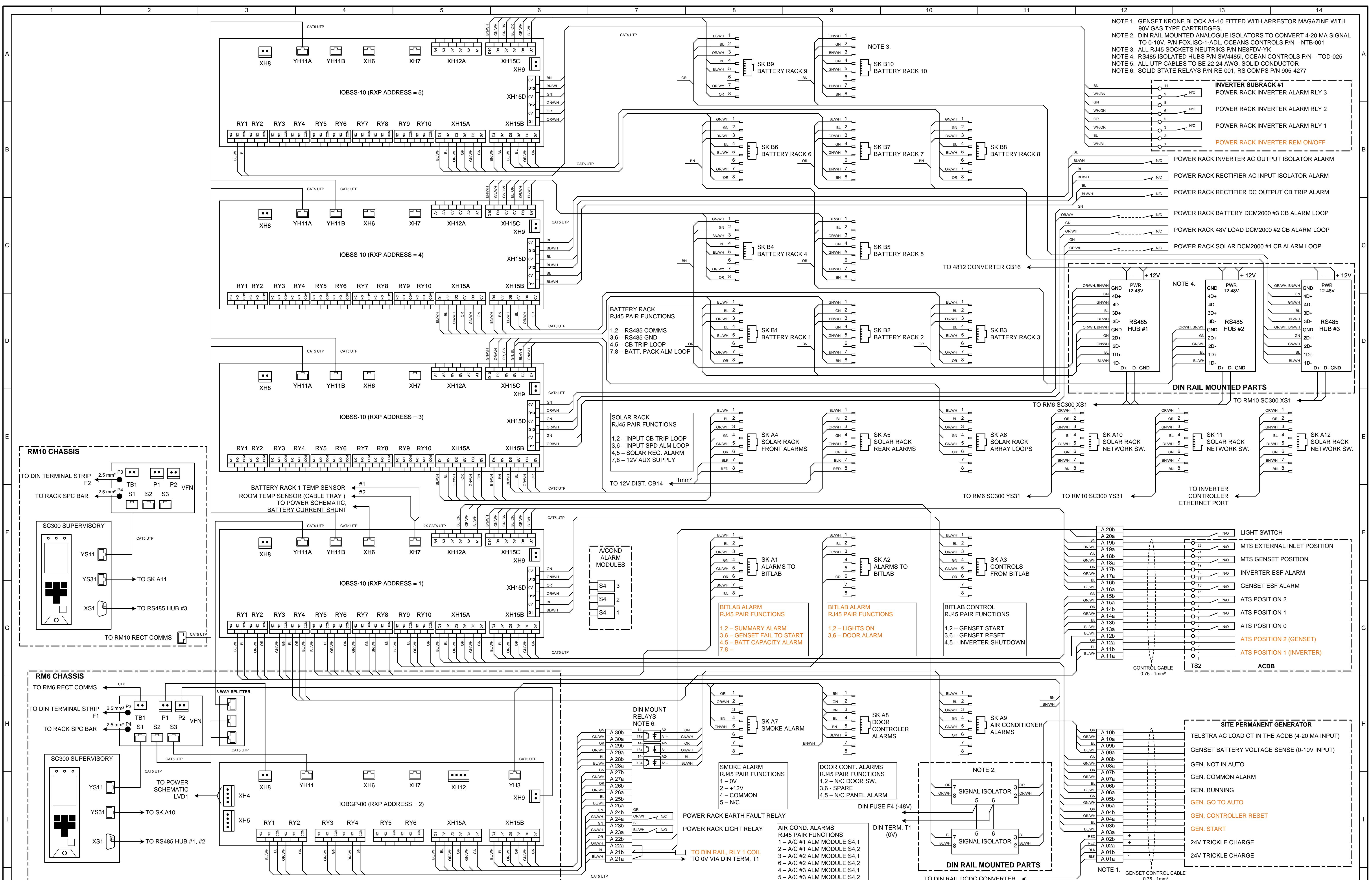
DRAWN	G. GREBER	13-6-2023
TRACED		
CHECKED		
SUPT DRAFT		
PROJ. ENG.		
APPROVED		
APP. FOR CONST.		

RioTinto
 HAMERSLEY IRON PTY LTD
 HAMERSLEY HMS PTY LTD
 ROBE RIVER MINING COMPANY PTY LTD

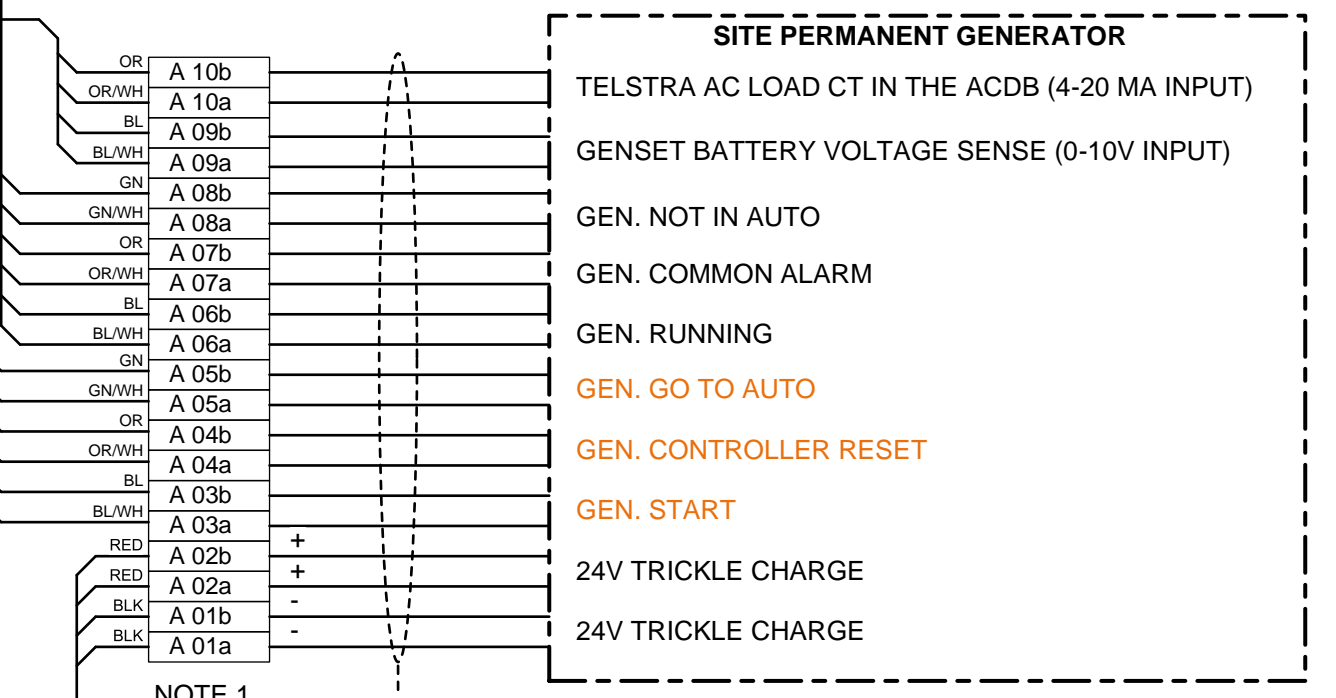
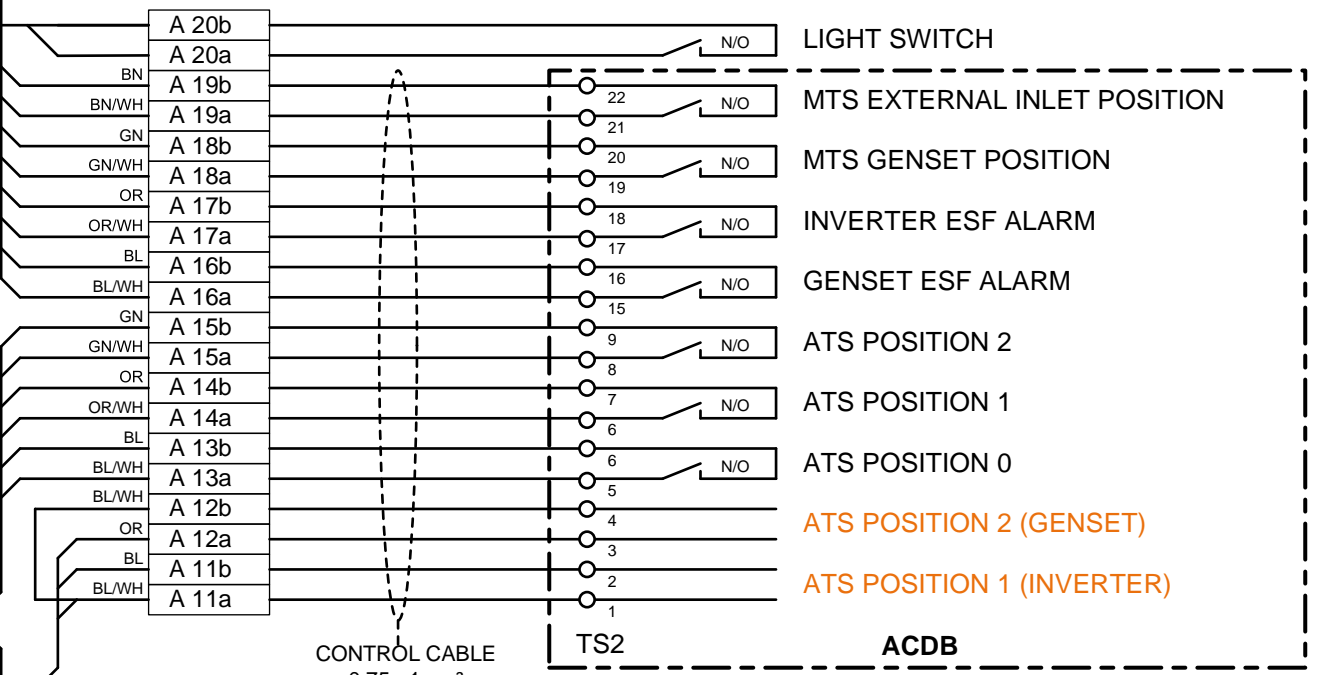
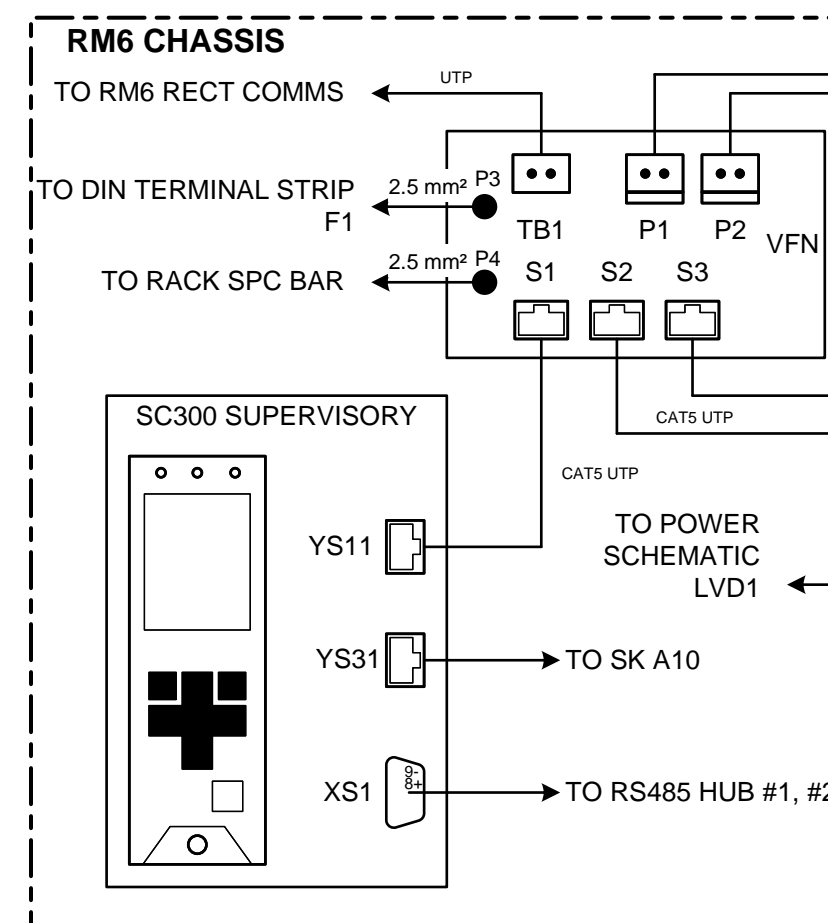
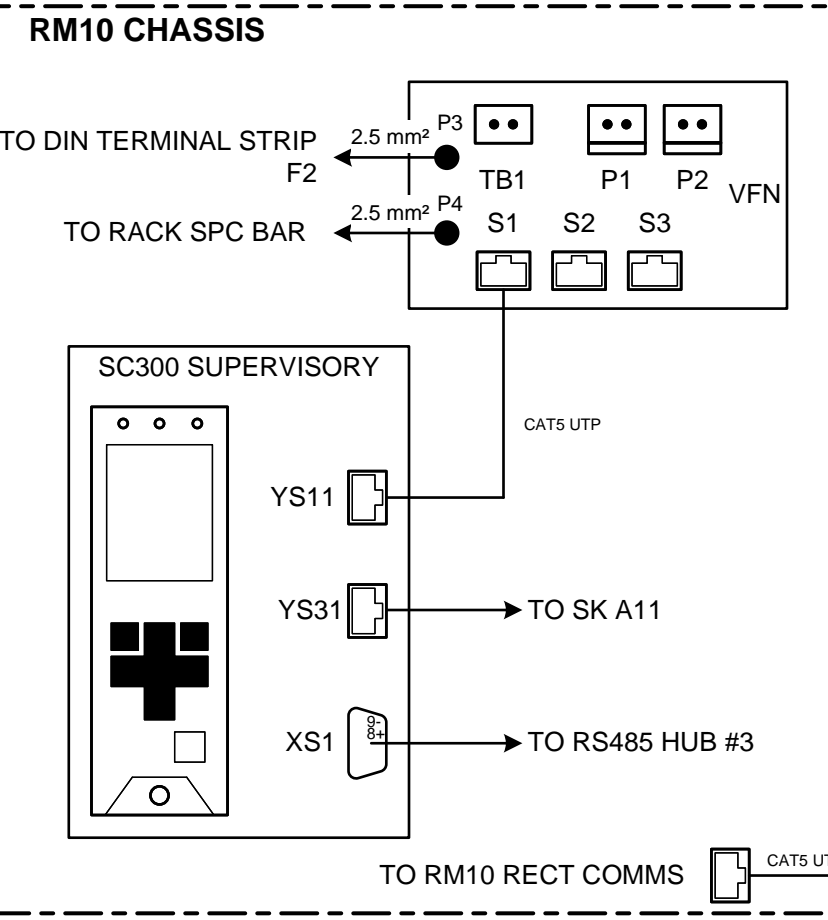
INFORMATION AND REPRESENTATIONS ON THIS DRAWING ARE THE INTELLECTUAL PROPERTY OF THE RIO TINTO GROUP UNLESS SPECIFICALLY IDENTIFIED OTHERWISE. ALL RIGHTS INCLUDING USE RESERVED.

THIRD ANGLE PROJECTION

SCALE: NTS
 DRAWING NUMBER: _____
 PROJECT / JOB NUMBER: _____



NOTE 1. GENSET KRONE BLOCK A1-10 FITTED WITH ARRESTOR MAGAZINE WITH 90V GAS TYPE CARTRIDGES.
 NOTE 2. DIN RAIL MOUNTED ANALOGUE ISOLATORS TO CONVERT 4-20 MA SIGNAL TO 0-10V. P/N FOX-ISC-1-ADL, OCEANS CONTROLS P/N - NTB-001
 NOTE 3. ALL RJ45 SOCKETS NEUTRIKS P/N NE8FDV-YK
 NOTE 4. RS485 ISOLATED HUBS P/N SW44851, OCEAN CONTROLS P/N - TOD-025
 NOTE 5. ALL UTP CABLES TO BE 22-24 AWG, SOLID CONDUCTOR
 NOTE 6. SOLID STATE RELAYS P/N RE-001, RS COMPS P/N 905-4277



REV	BY	DATE	DESCRIPTION
0	GG		INITIAL DRAFT

REV	BY	CKD	APP	DESCRIPTION

DRAWN	G. GREBER	22-6-2023
TRACED		
CHECKED		
SUPT DRAFT		
PROJ. ENG.		
APPROVED		
APP. FOR CONST.		

RioTinto

HAMERSLEY IRON PTY LTD
 HAMERSLEY HMS PTY LTD
 ROBE RIVER MINING COMPANY PTY LTD

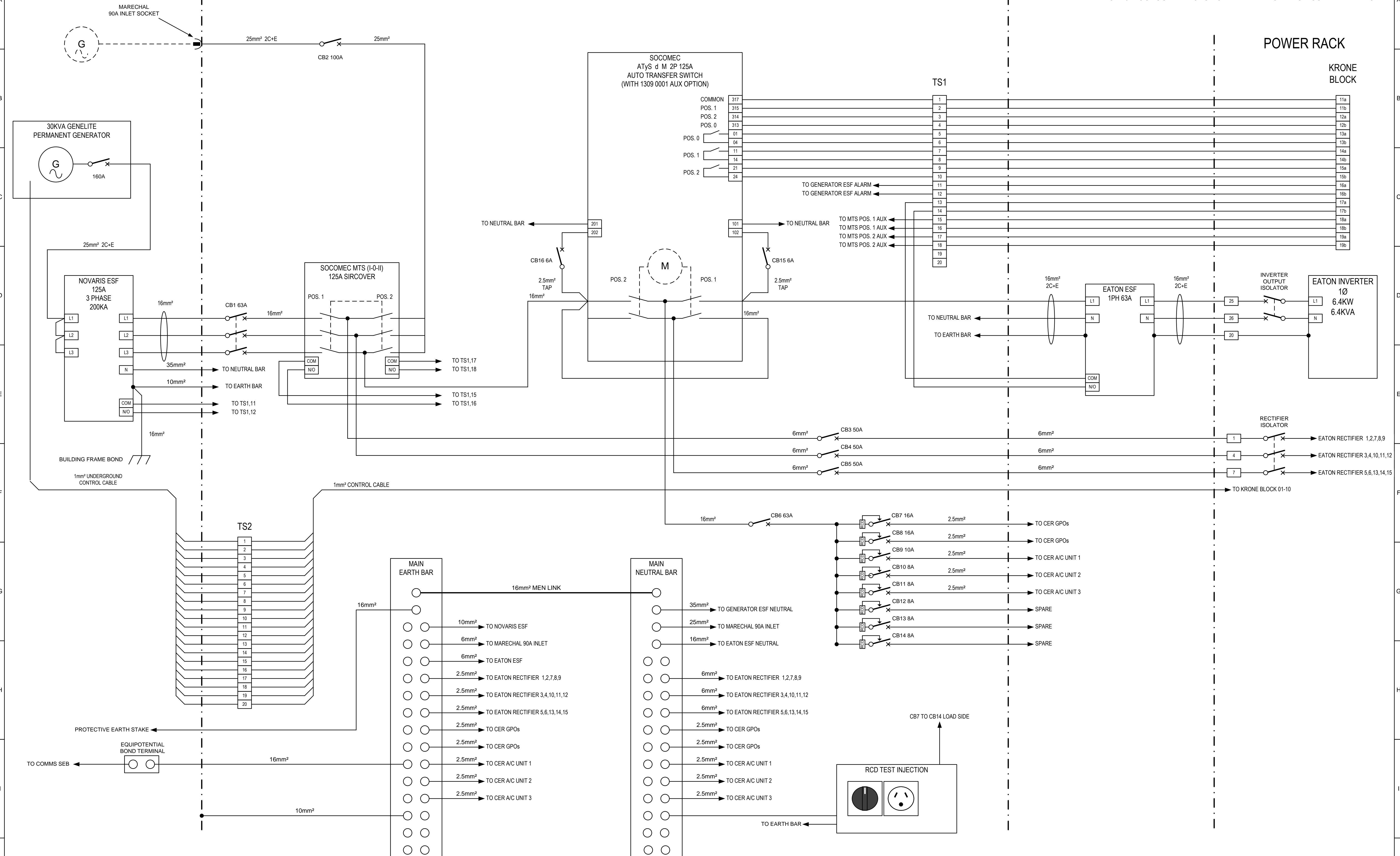
INFORMATION AND REPRESENTATIONS ON THIS DRAWING ARE THE INTELLECTUAL PROPERTY OF THE RIO TINTO GROUP UNLESS SPECIFICALLY IDENTIFIED OTHERWISE. ALL RIGHTS INCLUDING USE RESERVED.

SCALE NTS
 DRAWING NUMBER
 PROJECT / JOB NUMBER

THIRD ANGLE PROJECTION

GENERATOR / INVERTER ACDB

NOTE 1. TRANSFER SWITCHES TO HAVE PROTECTIVE COVERS FITTED
 NOTE 2. DUAL SUPPLY LABELS TO BE FITTED TO THE ACDB DOOR
 NOTE3. LOCKOUT DEVICES TO BE FITTED TO ALL CIRCUIT BREAKERS



REV	BY	DATE	DESCRIPTION	CKD	APP
0	GG		ORIGINAL DRAFT		

REV	BY	DATE	DESCRIPTION	CKD	APP

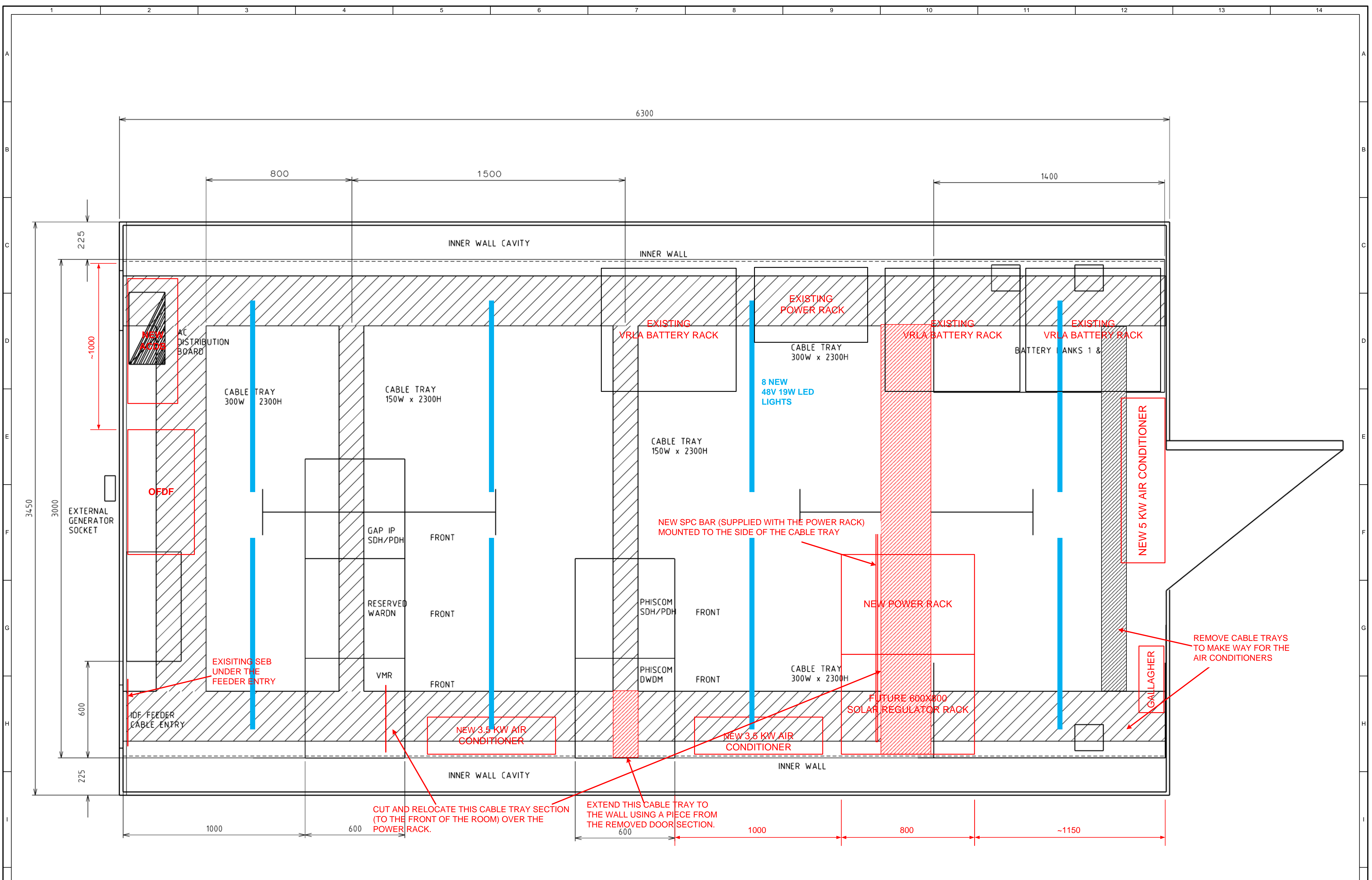
REV	BY	DATE	DESCRIPTION	CKD	APP

DRAWN	G. GREBER	28-8-2023
TRACED		
CHECKED		
SUPT DRAFT		
PROJ. ENG.		
APPROVED		
APP. FOR CONST.		

RioTinto
 HAMERSLEY IRON PTY LTD
 HAMERSLEY HMS PTY LTD
 ROBE RIVER MINING COMPANY PTY LTD

PROJECT / JOB NUMBER

SCALE	NTS
DRAWING NUMBER	REV
PROJECT / JOB NUMBER	



REV	BY	DATE	DESCRIPTION	CKD	APP
0	GG		NEW EQUIPMENT MARKUP		

REV	BY	DATE	DESCRIPTION	CKD	APP

REV	BY	DATE	DESCRIPTION	CKD	APP

DRAWN	G. GREBER	30-6-2023
TRACED		
CHECKED		
SUPT DRAFT		
PROJ. ENG.		
APPROVED		
APP. FOR CONST.		

RioTinto
 HAMERSLEY IRON PTY LTD
 HAMERSLEY HMS PTY LTD
 ROBE RIVER MINING COMPANY PTY LTD

KP130 RBS SOLAR HYBRID POWER PROJECT
 CER FLOOR LAYOUT

SCALE	NTS
DRAWING NUMBER	REV
PROJECT / JOB NUMBER	